

VTRUSS STRAIGHT CORNER

SPECIFICATION SHEET

IAPMO UES 2017



Structa V Truss Straight Corner is an improvement on our original Structacorner design. V Truss provides greater strength, ease of installation and increased embedment. V Truss is the result of our continued commitment to provide the best lathing products possible.

FEATURES

- Engineered to provide superior reinforcement for stucco corners
- Unique Truss design ensures a consistent 'true' - straight reinforcing corner - every-time
- Increased rigidity for precise corner plaster work
- Improved embedment
- Abundant nailing opportunities & twin trac's – for ease of attachment
- Easy to handle with fewer sharp ends

PROFILES

- 3 Coat Straight 9' and 10'
- 1 Coat Straight 10'
- For Arch, Bullnose Arch and Short flange – we provide our regular Structacorner design

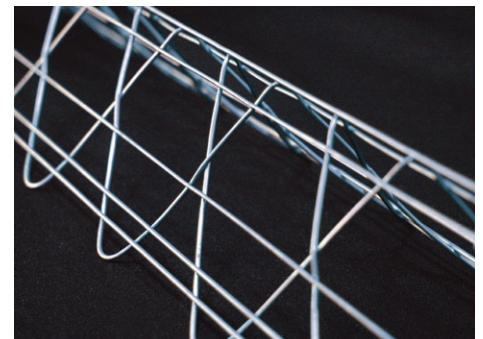
PACKAGING

- 40 pieces per carton /
50 cartons per pallet

FINISHES

- Also available in Stainless Steel

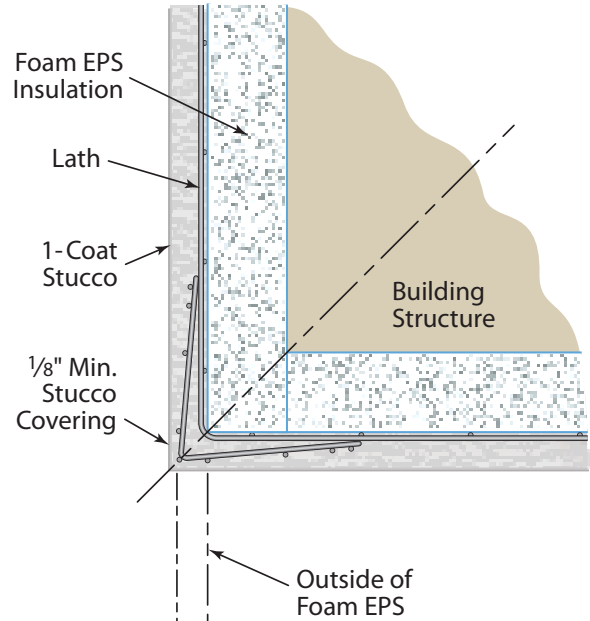
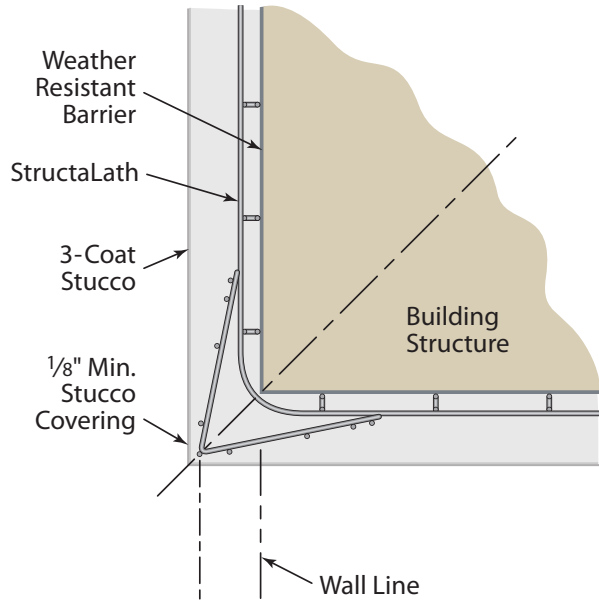
Conforms to requirements for stucco reinforcing as defined in the UBC, IBC & IRC and in accordance with ASTM C 1063 and ASTM A 641



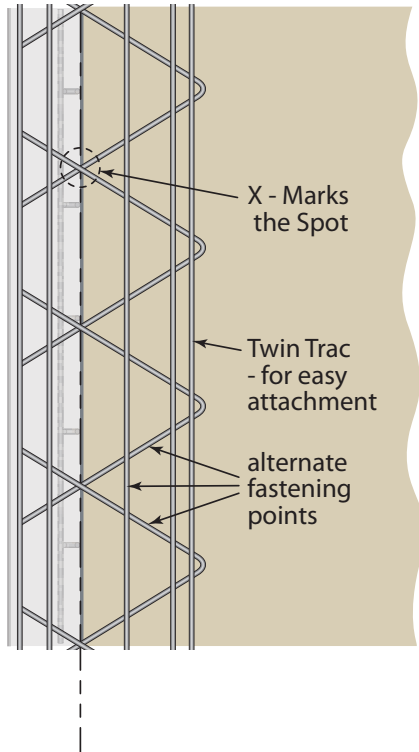
VTRUSS STRAIGHT CORNER

SPECIFICATION SHEET

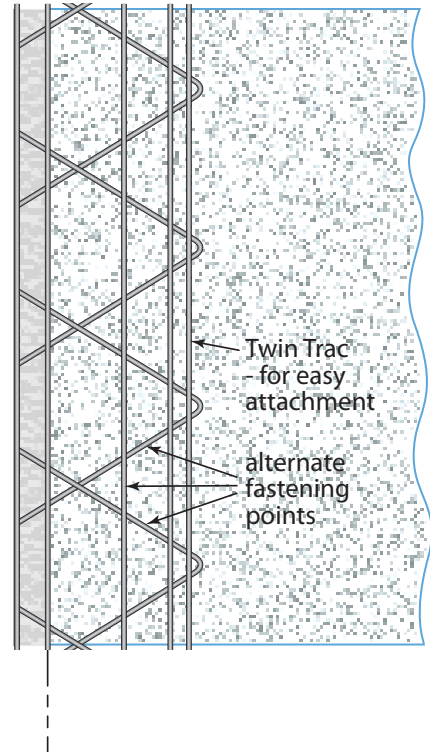
IAPMO UES 2017



Sighting 3-Coat Straight Corner Lath



Sighting 1-Coat Straight Corner Lath



Store product in a dry area prior to installation.

Structalath products are for use as alternative laths used as reinforcement for exterior plaster complying with IBC Section 2507, IRC Section R703.6.1 or UBC Section 2508